



Who do we serve at Central Counties?

Adult and Children Behavioral Health Services

Central Counties Services (CCS) provides a variety of services to Adults with severe mental illness and to children (ages 3-17) with serious emotional and behavioral problems. CCS follows proven methods and practices to assist these individuals to improve their quality of life and to become more successful in the community and school. These practices include: group and individual therapy, psycho-social/rehabilitation skill training, and physician services. These practices target the management of symptoms, maladaptive behaviors and issues in everyday life at home, work and school. They are performed by highly trained licensed therapists, case-workers, psychiatrists and other licensed prescribers. CCS's dedicated staff is committed to serving and assisting our clients to become resilient and achieving recovery from mental illness and behavioral problems. They work with each individual and family to reach goals set by the clients themselves to improve all aspects of their lives whether it is elimination of symptoms, treatment of trauma, self-improvement, learning housing and employment skills or enhancing positive behavior at home and school for the children. Central Counties Services respects the values of each individual and measures success through the attainment of the goals of each of our clients.

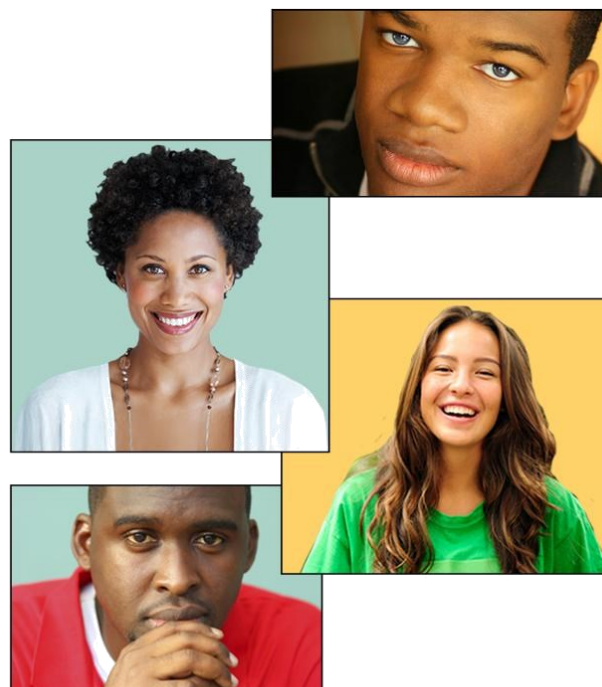
Early Childhood Intervention:

Central Counties Services contracts with the Texas Health and Human Services to provide early intervention services. ECI provides developmental services, education and support to children 0-3 years old with developmental delays and their families. Services available to address individual needs are occupational, physical and speech therapy, specialized skills training, counseling, family education, social work and case management, nutrition and nursing. ECI providers work with the child's caregivers in the natural environment building intervention strategies into their everyday routines, thus optimizing the child's opportunities for growth and development. Eligibility for ECI services is based strictly on the child's developmental delay or medical condition. ECI shares in the cost of services with families who are able to pay based on a sliding fee scale. Services that have no cost to families are evaluation, plan of care (IFSP) development, case management and translation.

Intellectual and Developmental Disabilities:

Central Counties Services contracts with the Texas Department of Health and Human Services to serve as the agency's local authority. Services are available to persons who meet the state's "priority population" criteria, which consist of the following:

- Persons with intellectual disability as defined by Texas Health and Safety Code 591.003
- Individuals with a developmental disorder, as defined in the current addition of the DSM, including autism
- Individuals who have a related condition, listed in the Texas DADS Approved Diagnostic Codes for Persons with Related Conditions, who are eligible for, and enrolling in services in the ICF/MR Program, Home and Community Based Services (HCS) Program, or Texas Home Living (TxHmL) Program;
- Nursing facility residents who are eligible for specialized services for intellectual disability, developmental disability or a related condition pursuant to Section 1919(e)(7) of the Social Security Act.



BOARD OF TRUSTEES MEETING



6:30 p.m.
on the fourth Tuesday
of every month



CENTRAL COUNTIES SERVICES

MEETING BEHAVIORAL AND DEVELOPMENTAL NEEDS

Bell • Coryell • Hamilton • Lampasas • Milam

December/January 2018

Centerline
Newsletter

Executive Director

Ray Helmcamp, Ph.D.

Chief of Operations

Johnnie Wardell

BOARD OF TRUSTEES

Steven Wick, Chair
Ann King, Vice Chair
Suzane Faulkner, Secretary
Dr. Louella Tate
Alison Esparza
Judge Joe Carroll
Nancy Holle
Judge James Lively
Commissioner Ray Ashby

Central Counties Services
Administration
304 South 22nd Street
Temple, Texas 76501
254.298.7000
www.centralcountiesservices.org

24/7 Toll Free Crisis Line:
1.800.888.4036

Serving the residents of Bell, Coryell, Hamilton, Lampasas, and Milam Counties since 1967.

Our Mission:

Improving the lives of the people we serve.

Our Vision:

A community where all people grow and develop in a healthy and vigorous way.

Central Counties Services

Board of Trustees

meets at 6:30 p.m.
on the fourth Tuesday
of every month.



50 Years of Service for Central Counties Services

**Central Counties Services celebrates
50 years with Belton event**

BELTON — Central Counties Services staff members, partners and supporters gathered Thursday, November 9, 2017 to celebrate the organization's 50 years of service to the region.

The reception at the Bell County Expo Center in Belton was attended by a variety of community leaders, law enforcement officers, health care workers and others.

Central Counties Services offers various resources for people with mental illnesses or intellectual and developmental disabilities.

Executive Director Ray Helmcamp said the organization has grown dramatically over the years.

"We started with four employees in 1967 in the basement of the Bell County Courthouse," Helmcamp said. "Now we have 318 employees covering five counties."

The organization operates in Bell, Coryell, Hamilton, Lampasas and Milam counties and has 16 different service sites, including seven mental health clinics.

Helmcamp said Central Counties Services tries to help persons with mental illness get the treatment they need.



50th Anniversary Celebration, continued from page 1.

Those with intellectual and developmental disabilities are given rehabilitation or training to help them become more independent and more integrated into the community.

Behavioral Analyst Kristen Zajicek is working to help people in Central Texas become more independent. "We provide important services for individuals and families that might not otherwise have many options, those individuals with IDD and mental illness," Zajicek said.

Zajicek helps her clients learn how to interact with their co-workers, neighbors and other members of the community. "I enjoy seeing our consumers becoming successful in life," she said. "I work with individuals who have maladaptive behaviors ... so they can live independently."

Helmcamp said that other than growth, the primary change in Central Counties Services has been in the increasing emphasis on helping clients integrate into the community rather than separating them out. "Our evolution has taken us from institutional-based care to community based care," he said. "Back in the '80s, most of the people were housed in state hospitals."

Helmcamp said that in the future, he believes Central Counties Services will continue to work more and more with other organizations in the community. "Our future is geared to partnering with local community groups," he said. "One agency can't do it alone anymore."

Central Counties Services Planning and Network Advisory Committee (PNAC)



Join and be the
Central Texas Community's
voice at the Center!

For more info, call 254.298.7096



24/7 Toll Free Crisis Line:
1.800.888.4036
Toll Free Non-Emergency Line:
844.815.6221

Improving the
lives of the
people we serve.

Find us at:
centralcountiesservices.org
Call us at: 254.298.7000



And on Face book, Twitter,
and YouTube



YouTube



Central Counties donates to local charities in the community.

By Monica Silcott, Central Counties Services

In the spirit of this "giving" season, Central Counties partnered with local charities across the community that are all worthy of attention this holiday season. No matter where you live, there are plenty of ways to give back, so we selected and presented donations to several charitable organizations in our local community. We are reminded of how fortunate we are in an era where generosity and helping those in need is a core value using contributions to help those in need of support. We were pleased to provide eight (8) local charities/organizations checks in the amount of \$1000 each to support their mission. Listed below are those that received donations. This list includes:

- **Feed My Sheep**– Reestablish the homeless as productive members within the local workforce and community, build self-esteem by assisting in obtaining identification, housing, education (GED), medical and other personal needs, expand assistance services to include a short-term women and children's shelter, treat each individual with dignity, love and respect.
- **Salvation Army**– Provides many different programs and services that range from sheltering and feeding the homeless to rebuilding communities after natural disasters. We comfort the sick, and elderly, support young people through after-school programs, and respond to needs in our community with practical help.
- **CASA of Bell and Coryell Counties**– The mission of Texas CASA is to support local CASA volunteer advocacy programs and to advocate for effective public policy for children in the child protection system.
- **Brown Santa of Milam County**– To improve the lives of the children of Milam County by providing toys and books during the holiday season.
- **Lampasas Volunteer Fire Department**– Continued a long tradition of helping needy families at Christmas time with new toys and gifts distributed to the various organizations in their community.
- **Boys and Girls Club of Gatesville**– Enable all young people, especially those who need us most to reach their full potential as productive, caring and responsible citizens. Providing a safe place for youth to learn and grow, offer on-going relationships with caring, adult professionals and engage in life-enhancing programs and character development experiences.
- **Lee Health Care of Hamilton**– Enrich the lives of all they are blessed to serve by supporting Elder Tree.
- **Good Fellows of Hamilton**– Provides help to the less fortunate during Christmas.



Johnnie Wardell, Chief Operating Officer of Central Counties Services presenting a donation check to a local charity, received by Kelly M. Hardy, CASA of Bell and Coryell Counties.